



BARRABA COMMUNITY NEWS

COMMUNITY OWNED AND EDITED

FREE LOCAL NEWSPAPER

Wednesday 27th May 2026



BARRABA RSL & RECREATIONAL CLUB LTD

Phone 67821379

For the information of members and guests.

THIS WEEK

**THURSDAY 28th MAY
BINGO**

First game starts at 6pm

**FRIDAY 29th May
MEAT RAFFLES**

Tickets on sale from 5.30pm
Membership Draw \$2000 (3 draws)

**SUNDAY 31st May
ANGLER CLUB RAFFLES**
Membership Draw \$1600

BISTRO HOURS

Phone 0427330808

DINE IN OR TAKEAWAY

DAILY BLACKBOARD SPECIALS

PIZZAS MADE TO ORDER

MONDAY/TUESDAY/WEDNESDAY: **CLOSED**

THURS/FRI/SAT: LUNCH 12-2PM DINNER FROM 6PM

SUNDAY: 12-2PM

I'm taking part in Super Steps 2026 to support Starlight Children's Foundation by doing 10000 Steps a day in May. Please sponsor me and support my efforts to give back and change lives.

Thank you so much, **Annabel**

[supersteps.org.au](https://www.supersteps.org.au) <https://www.supersteps.org.au/s/17102/17916>

Annabel has done 200,000 steps so far this month. Running, walking and skipping and has raised \$1123.00. It's not too late to donate at Saunders Fruit and Veg.



Westpac helicopter

Around 8:30 pm Tuesday 19 May, NSW Ambulance tasked the Westpac Rescue Helicopter to a motorcycle accident on a property between Manilla and Barraba. A man in his 20s who had the accident earlier in the day was found and then treated at the scene by NSW Ambulance paramedics as well as the NSW Ambulance critical care paramedic and a NSW Health doctor from the helicopter's critical care medical team for head injuries and exposure before being transported to John Hunter Hospital in a serious condition.

Ecological Burn Notice

Please be advised that Whitehaven Coal will be undertaking burn preparation and cool season Ecological Burns on the following Biodiversity Properties "Nindethana", "Rosevale", "Wirradale", and "Yarrowonga" between 30th March and 26th June 2026. For further information, please contact Whitehaven Biodiversity on 0488 407 000.

2026 Myall Creek Massacre Memorial Gathering
SUNDAY 7TH JUNE 2026

See more information on page 10

Help shape our
community's future!

have
your
say

on the draft 2026/2027
**Operational Plan
and Budget**

before 10 June 2026

Our 2026/2027 Operational Plan and Budget
guides our community activities, projects and
services delivered over the next 12 months.



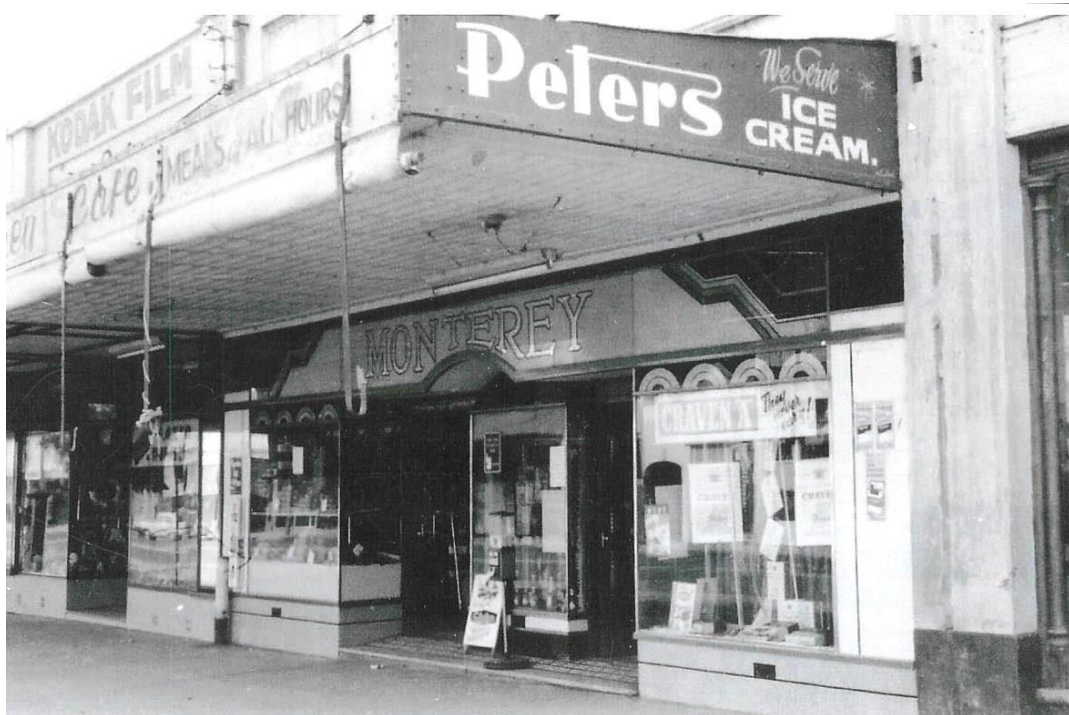
haveyoursay.tamworth.nsw.gov.au/2026-27-operational-plan-budget



Nandewar
Historical Society Inc

The Monterey Café — Barraba

Anna Cominakis, Effie Haggis and Kathleen Psaltis



The Monterey Café was situated at 111 Queen Street, Barraba, built early 1930s. It was owned by business partners, James Sofianos and Jack Conomos. Both men hailed from the Greek islands, James from Lesvos and Jack from Kythera. The two men originally opened the Empire Café adjoining the Empire Theatre in 1928. Jack, his wife, Irene and their five children lived in the residence at the back of the café which is now the Backpackers. Business grew and they soon needed larger premises, so the two men bought land opposite their smaller existing Empire Café and the Monterey was built. Jim and Jack loved Barraba. It was a bustling, prosperous town where they were made welcome. 1937 saw Jim return to Greece for a holiday, and while there he married Electra and the newlyweds returned to Australia in 1939. In the mid 1940's Jack and his family left Barraba, while Jim and Electra stayed on.

After Jim's untimely death in 1950, Electra's young brother, Jim Sarikas, at the tender age of 21, took over the helm of this very busy café. He had been in Australia for a scant three years.

The building was Art Deco, the trend of the day. It was modelled on the latest American cafes, hence the American name. The shop front consisted of three large display windows, with gold and glass double doors either side of the centre window. Fruit was displayed and sold from the first window. The smaller centre window showcased refreshment suggestions. Cups and saucers on a silver tray with a silver sugar basin and milk jug and biscuits were there, as well as fake wax ice cream sundaes and ads for fruit drinks. The third window, dare we say, was for cigarette advertising, decorated by the cigarette companies with oversized cigarette boxes and a few streamers.

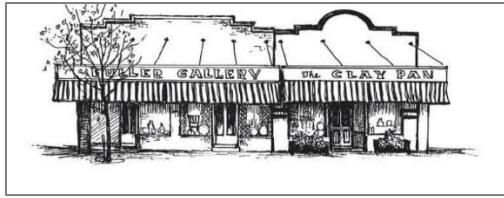


Electra Sofis and Mary Sarikas inside the Monterey - 1950's

On entering the cafe, the front section was tiled with small white hexagonal tiles, bordered with a black and white key design. On the left side of the shop stood the sweet showcase. Loose lollies in glass compartments filled the top section. Spearmint logs, butter balls, liquorice allsorts, fruit pastilles and jubes, to name some. These were scooped into paper bags and weighed on the large scales which sat on the counter.

Boxed chocolates - everything, including Nestle Winning Post, Rowntree Romance, MacRobertson, Old Gold, Cadburys and tins of toffees. At Easter time, Easter eggs, which were an expensive treat back then, were showcased in the bottom section. Behind the counter were display shelves with more chocolates, chocolate bars and sweets. On the back wall, between the fruit window and chocolate display was a glass case where cigarettes and tobacco were kept. Below this was a display of other "necessities". Tallyho and Zigzag cigarette papers, Federal and Redhead matches, Aspro and Bex and Vincent's headache powders - all politically incorrect now!

Next to the sweets counter stood a delicatessen display refrigerator full of smallgoods. Saveloys and frankfurts, ham and corn beef were displayed along with long rolls of Devon and garlic sausage, ready to be sliced, weighed and sold. Continuing along was the soda fountain. The original one was all marble with chrome soda levers that dispensed soda water for making soft drinks and ice cream sodas. Due to gas leaks from the motor, this fountain was replaced with a modern stainless steel milk bar in the 1950s. This new modern one had large, round refrigerated holes for storing five gallon galvanised metal drums of ice cream. The ice cream was delivered in "shippers" which were big canvas bags packed with dry ice and came on the train from Tamworth. Fruit juices (orange, lemon and pineapple) were all made with fresh fruit in house and milk was also stored there.



Barraba Potters and Craft Guild News

Warm and Woolly, Tree Bombing and Yesteryear Exhibition. 5TH to 8TH JUNE.

Barraba Potters and Craft Guild President Mandy Cabot is happy to welcome back Janice Smith from Narrabri to Warm and Woolly on Saturday the 6th of June to demonstrate how to make this lovely little woollen brooch. Janice can supply a kit for \$5.00 if anyone would like to join in.



Program for the Long Weekend:

Friday 5th June: 10am - Tree Bombing of the Plane Trees in front of the Gallery, Museum, Bill McKid's and the bench seat in front of the Gallery. The Gallery will be open for people to browse items for sale and to reminisce and ponder over the items on display in the "Yesteryear" exhibit in the Clay Pan until 3pm.

Saturday 6th June: 10am – Gallery and Clay Pan open as per Friday. Devonshire morning tea available from 10am. From 12md homemade soup, bread roll, tea, coffee & biscuit for lunch. Spinning and wool brooch demonstrations. Mini street stall. Gallery & Clay Pan close at 3pm.

Sunday 7th June: 10am – Gallery and Clay Pan open, as per Friday. Sponge cake, jam and cream for morning tea available from 10am. From 12md homemade soup, bread roll, tea, coffee & biscuit for lunch. Gallery & Clay Pan close at 3pm.

Monday 8th June: 10am to 3pm – Gallery and Clay Pan open.

Raffle tickets in a meat or fruit voucher or bottle of wine are now available at the Fuller Gallery for \$2 per ticket.

We look forward to everyone's support of our exhibition.

Congratulations to the 'Sunday Sewers' on being nominated in the TRC National Volunteer Week - *Volunteer Team or Group of the Year* category for their contributions of sewing and knitted items to numerous community groups. Presentations were held on the 23rd May in Bicentennial Park, Tamworth during the "TRC National Volunteer Week Activities".

Congratulations ladies on your nomination, it was very well deserved.

Our street stall will be held on Thursday the 28th May from 9am until sold out. Donations for sale will be greatly appreciated. Thank you to our volunteers who will be helping at the stall.

Patti Crowley
Publicity Officer



Barraba Potters and Craft Guild Street Stall

**Thursday 28th May. 9am till sold out
Outside the Playhouse Hotel
All donations gratefully accepted**



SENIOR CITZ NOTES

Next meeting is this Friday and all members are requested to attend.

The next Market Day is set down for Saturday 11th July. Stall holders most welcome. To book a stall please contact Judy Brady on 0429821158 as space is limited.



HAVE A CRACK, GIVE A BIT BACK

Many hands make light work, and the many hands of volunteers across the region have made our region a great place to live, work and play. Member for Tamworth Kevin Anderson ushered in Volunteer Week for 2026 by recognising the efforts of local volunteers and encouraging people to give back.

“Behind every strong community is an army of volunteers carrying the load, making the region a great place to live,” Mr Anderson said. “Volunteers make an incredible contribution. They don’t just give their time, they give communities a heartbeat by caring for, maintaining and improving the essential assets, groups and sporting teams we love. They clock in expecting nothing back except a wave hello and a feeling of contributing to their community. Where there’s a fundraiser, a barbecue, or a crisis, there’s probably a volunteer saying, ‘Righto, I’ll do it.’”

Mr Anderson added that many volunteer organisations are on the hunt for more people to join their ranks to ensure they can continue to contribute meaningfully. “Volunteer organisations are the engine room of our region, but unfortunately, many are running on fumes and need more people to sign up,” Mr Anderson added. “My message to the community this volunteer week is: Have a crack, give a bit back. Whether it’s a few hours on a Bunnings Barbecue, delivering meals to the elderly, a Sunday morning spent cleaning up the riverbank, or serving with our emergency services, it doesn’t take much to give back to the community. You’ve just got to have a crack, give a bit back, and help build a better region.”

ANDERSON FIRES UP OVER ROAD DELAYS

The time for planning is over – the time for construction is now on two key road projects in the electorate. Member for Tamworth Kevin Anderson said there are unacceptable and unexplained delays on the \$58 million project Goonoo Goonoo Road duplication and the \$25 million Port Stephens Cutting upgrade.

“Goonoo Goonoo Road is the gateway to Tamworth, and Port Stephens Cutting is a vital connection for tourists to our region, and for farmers who regularly use the road to get to and from Tamworth,” Mr Anderson said. “Right now, the stretch from Jack Smyth Drive to Calala Lane is single lane.

Our population is growing, and traffic is increasing. This upgrade needs to happen to smooth the flow of traffic and make the entrance to our city something we can be proud of. Port Stephens Cutting is another road that is in desperate need of an upgrade. The hairpin turns on that road need to be eased so that residents and truck drivers can get up and down the cutting safely. The Federal Labor Government have been holding up funding on that project for nearly four years which is unacceptable. Our community has had enough and I’m calling on the Labor Government to get moving on these critical road upgrades now.”

Mr Anderson put the government on notice in parliament. He said:

1. It’s been 9 months since the Labor Government have any update on the \$58.4m Goonoo Goonoo Road duplication;
2. Labor have given no updates on the \$25m Port Stephens Cutting update since they were elected 3 long years ago;
3. Condemns the Labor Government for ignoring these critical road upgrades in Regional NSW;
4. Calls on the Labor Government to start work now and deliver these much-needed road upgrades.

USING YOUR FREE WASTE VOUCHER



The long weekend is coming... so do you need to think about waste? Whether you're tackling a clean-up or hosting visitors at home, now's the time to make sure your waste vouchers are sorted.

To avoid delays, please ensure you can access your vouchers by 4pm Thursday 4 June 2026, as Council staff won't be responding to requests over the public holiday period.

- ✓ Already registered? Log in using your registered email
- ✓ New user? Make sure you register ahead of time
- 📄 Don't forget to check the updated T&Cs before applying.

👉 Get started here:

<http://www.tamworth.nsw.gov.au/.../waste.../waste-vouchers>

CATHOLIC CHURCH TIMES

Change of time for this Sunday only,
Mass Sunday 31 May 10.00am,
Normal mass time resumes the following Sunday.

BARRABA UNITING CHURCH NOTICES

Sunday 31st May
Service Time 10:30am
This Sunday only combined with Manilla at Barraba
Followed by a light lunch
From Sunday 7th June times return to 8:45am
All welcome

RECYCLE YOUR BLISTER PACKS!



One empty pack doesn't look like much... until you see them all together. Over the past year, our community has helped recover an incredible 164,101 blister packs (that's 246kg!) through the Pharmacycle program.

What's Pharmacycle?

It's a simple way to recycle used medication blister packs instead of sending them to landfill.

Every pack you return helps reduce waste and supports a more sustainable future for our region.

So where can you drop yours off?

It's as easy as visiting one of our local voluntary product stewardships/participating pharmacies:

- Chemist Warehouse Tamworth
- Chemist Warehouse Tamworth Central
- Manilla Pharmacy
- Good Price Pharmacy Warehouse Tamworth

To stay up to date with participating pharmacies head to 👉 www.pharmacycle.com.au

Want to know what happens to the collected blister packs, check out Pharmacycles recycling process information:

<http://www.pharmacycle.com.au/how-pharmacycle-recycles...>

So next time you finish a pack, don't bin it - bring it back.

ANGLICAN CHURCH TIMES

St Laurence's Barraba
Sunday service at 10.00am
Woodsreef 11.30am, 2nd Sunday of each month

TRAVELLING TO TAMWORTH FROM BARRABA – IN 1875

By Terry Threlfall

I sometimes grumble about the state of the road when travelling to Tamworth; but when I read the description of the then “road” (in Aaron Hardy’s book “Red Hill”), I guess I don’t have much to complain about.

“The main Tamworth road would serve you for the first portion of your journey, carrying you south from Barraba through country that alternated between cleared pastoral land and stands of timber. But about four miles from town, if you were wise, you would need to abandon Her Majesty’s highway for the hills, not out of preference for scenic routes, but out of sheer necessity driven by the deplorable condition of the road itself.



A correspondent (1) visiting the (gold) field in 1875 described the section of the road with barely contained outrage: “Anything more disgraceful, in the shape of a main road, does not, I believe, exist in the colony than that portion of the Tamworth road about half-a-mile below Barraba.” The road ran between fences that prevented any possibility of finding an alternative route on either side, and seemed to have been “made expressly to test the temper of teamsters, and the pluck of their cattle.”

.....Those vocal exertions, the cursing and shouting of bullock drivers trying to haul their teams through mud that could bog a dray to its axles, would have been colourful indeed, the kind of creative profanity that becomes an art form among men whose livelihood depends on persuading recalcitrant animals to perform seemingly impossible tasks. The pubs in Barraba no doubt benefitted handsomely from teamsters needing to calm their nerves and wash the taste of dust and frustration from their throats after successfully negotiating this section of the road. A man who has spent an hour bellowing at oxen while dragging a loaded dray through clinging mud develops a powerful thirst, and publicans who positioned their establishments conveniently along such routes understood this economic reality perfectly well.”

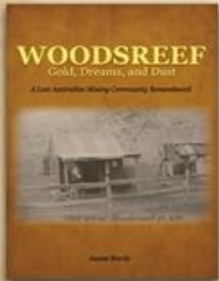
(from “RED HILL: Gold, reefs, and Fading Hope. A Lost Australian Mining Community Remembered” by Aaron Hardy [Self published] pp 46-47).

1. “A correspondent” was probably the writer of “Tamworth Weekly News – The Maitland and Hunter River General Advertiser”, a paper that circulated in the Barraba area at that time.

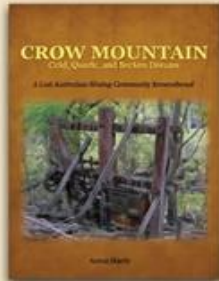
A Lost Australian Mining Community Remembered - A Series by Aaron Hardy

 **Three books. Three forgotten goldfields. One remarkable region.** 

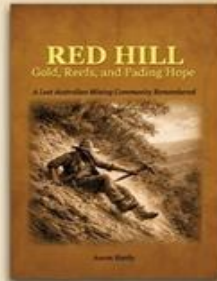
In the rugged ranges beyond Barraba, in the New England district of northern New South Wales, men once laboured in pursuit of gold — driving shafts through unforgiving rock, crushing quartz in stamper batteries, and building lives in communities that have since vanished almost without trace. These are their stories.



Woodsreef:
Gold, Dreams, and Dust



Crow Mountain:
Gold, Quartz, and Broken Dreams



Red Hill:
Gold, Reefs, and Fading Hope

Drawing on hundreds of contemporary newspaper accounts sourced from the National Library of Australia, supplemented by government mining records, lease registers, and years of hands-on exploration of these exploration of the fields themselves, this series reconstructs three lost goldfields in precise and human detail — tracing the mines, the men who worked them, and the hopes that brought them here.

They came for gold, stayed for hope, and left only their names behind.



<https://www.lulu.com/spotlight/aaronhardy>

GOLD MINING IN THE BARRABA DISTRICT

Recent publications now available: Author:
AARON HARDY

From Aaron Hardy’s Facebook page –

Just a reminder that all 3 of my books on the lost mining communities of Barraba, NSW are now available to buy!

These are stories that have largely been forgotten — the miners, the camps, the characters, and the landscapes that shaped this corner of New England. Years of archival research, historical photographs, and boots-on-the-ground fieldwork have gone into bringing these communities back to life on the page.

If you have any interest in gold or lost Australian history, these books are for you.

You can order these books online at:

<https://www.lulu.com/spotlight/aaronhardy>

From The Conversation

How do I know if my electric blanket or heated throw is safe?

Niusha Shafiabady, Professor in Computational Intelligence, Australian Catholic University

As temperatures drop across Australia, many households are pulling electric blankets and heated throws out of storage. For many, they're among the cheapest and most energy efficient ways to stay warm during winter. But some of us are understandably worried about fire risk. So how do you know your electric blanket is actually safe to use?



Is it compliant?

Modern electric blankets are generally considered safe when they comply with Australian electrical standards, as long as you follow the instructions. But damaged, ageing or poorly manufactured blankets really can create serious fire and burn risks. According to Australian fire authorities, we should treat electric blankets like any other electrical appliance and inspect them regularly for damage.

The good news is there are several simple checks you can use to determine whether an electric blanket is safe.

The first thing to check – ideally before you buy – is whether the blanket complies with Australian safety requirements. Electric blankets sold in Australia must comply with the Australian and New Zealand Standard 60335.2.17, which applies to flexible heating appliances such as electric blankets and heated throws.

How do you know it's compliant? The tag won't necessarily list the standard. Look for the regulatory compliance mark – it looks like a checkmark in a triangle. This symbol indicates the supplier has declared the product complies with applicable Australian safety requirements.

The mark is especially important when buying products online – some imported electrical goods may not comply with Australian safety standards. A blanket may appear normal on the outside while containing poor-quality internal wiring or unsafe electrical components.



A blanket compliant with Australian and New Zealand safety standards must have this regulatory compliance mark on the tag.

Is it old?

Another important factor is the age of the blanket. Many Australians continue using electric blankets for far longer than recommended. Most manufacturers and safety organisations generally recommend replacing electric blankets after about five to ten years, depending on their condition and frequency of use.

Older blankets may lack many of the safety protections now common in newer models, including overheat protection systems and automatic shut-off technology. These safety features are worth considering when purchasing a new blanket.

Is it stored properly?

One of the most common mistakes people make is folding blankets tightly during summer storage. This can damage the internal heating elements and weaken insulation around the wires. Electric blankets should ideally be stored flat or loosely rolled rather than tightly folded. Don't put anything heavy on top when storing them, either.

That's because over time, the internal heating wires can weaken at the points where they were folded and under pressure. In some cases, damage may not even be visible from the outside. There are several warning signs that may indicate internal wire damage, which means the electric blanket is unsafe and should no longer be used. You should immediately unplug and replace a blanket if you notice:

- hot spots or uneven heating
- scorch marks or burn smells
- frayed fabric or exposed wires
- stiff or lumpy sections inside the blanket
- flickering heat

- a controller that feels unusually hot, loose, or damaged.

Use general caution

Certain groups of people may need extra caution when using electric blankets. Older adults, people with diabetes and individuals with reduced heat sensitivity or nerve-related medical conditions may not notice overheating or burns quickly enough.

Pets can also create hidden hazards. Cats and dogs may scratch, chew, or puncture the fabric, potentially damaging the internal wiring without you noticing. Even small wire breaks can increase overheating or fire risks.

Importantly, an electric blanket should never actually feel really hot – this can lead to heat stroke and be dangerous. Modern blankets are designed to provide gentle and consistent warmth rather than intense heat. A blanket that becomes excessively hot in one area may actually be showing signs of an internal fault.

All that said, when properly certified, correctly used and regularly inspected, electric blankets and throws are generally considered safe household appliances.

A quick checklist

Don't assume your blanket is fine simply because it still heats up, especially if it's old. A safe electric blanket should:

- display the regulatory compliance mark
- include manufacturer details and instructions
- heat evenly across the surface
- have no visible damage or exposed wiring
- include safety features such as an automatic shut-off or timer.

Make sure to check the blanket carefully before starting to use it in winter, inspect it regularly during use, store it correctly, and replace it when signs of wear begin to appear. As long as you do the above, you should be able to use a heated blanket or throw without fear, and stay cosy during the colder months.



| Date | What is happening |
|--|---|
| Friday 29 May | Upper Horton Rodeo Camping grounds open at 12 Noon |
| | Upper Horton Sports Club Bar Open from 5pm Full Counter meals available between 6pm and 8.30pm at the Club |
| Saturday 30 May | Breakfast available 7am at Upper Horton Sports Club |
| | Sign on from 7.30am – Everybody needs to sign on |
| | Rider Briefing at 9 am – All riders must attend |
| | Track open 9.15am |
| | Hard loop closed at 1.00 pm |
| Main Loop closed at 3.30 pm | |
| (Subject to Clerk of Course) | |
| Camp oven dinner available at Upper Horton Club from | |
| 6.30pm | |
| Free raffles and auction for give-aways by Sponsors | |
| from 8pm | |
| Sunday 31 May | Breakfast from 7am at Upper Horton Sports Club |
| | Rider briefing from 8.30 am |
| | Track opens when all riders have attended briefing |
| | Hard Loop Closes at 12 noon |
| | Main Loop Closes at 1.00 pm |
| Clean up and leave camp | |

Myall Creek Massacre Memorial

2026 ANNUAL GATHERING EVENTS CALENDAR

Dhiirranhi ngiyani ganunga WE REMEMBER THEM

| FRIDAY 5 JUNE | SATURDAY 6 JUNE | SUNDAY 7 JUNE |
|--|---|--|
| MYALL CREEK SYMPOSIUM: WALKING THE TALK TOGETHER TO BUILD A BETTER FUTURE WHEN Friday 5 June 2026 TIMES 8.30am-5.00pm WHERE Oorala Aboriginal Centre, UNE Booloominbah Drive, Armidale, NSW or via Zoom RSVP Lunch is provided at no cost, please register for catering purposes. tcullen6@une.edu.au Use QR code to register for the Symposium or live-streamed Zoom link. | CERAMIC BREAK SCULPTURE PARK 'MYALL CREEK' ART EXHIBITION AND 'GATHER & TRADE' ABORIGINAL ARTISANS MICRO MARKETS WHEN Saturday 6 June 2026 TIME 10.00am-5.00pm WHERE Ceramic Break Sculpture Park, 2535 Alan Cunningham Road, Warialda, NSW ENTRY Gold coin donation Lunch and refreshments are available to purchase. cbreaksculpturepark.com.au | MYALL CREEK MASSACRE MEMORIAL COMMEMORATION WHEN Sunday 7 June 2026 TIMES 9.00am - Morning tea at Myall Creek Hall 10.30am - Gathering at Myall Creek Precinct 12.30pm - Return to hall for lunch 3.00pm - AGM WHERE Myall Creek Hall, Reserve Creek Road then proceed up to the Myall Creek Precinct cnr Birgara-Delungra Rd and Whitlow Rd Myall Creek, NSW Lunch is available to purchase at the hall. CASH ONLY! |

For further information or to make a donation myallcreek.org



Rugby Union Recap

On Saturday, 23 May, the Barraba Women hosted the Dorrigo Rangers following a weekend off for the Country Championships. Barraba came out firing early, crossing for three unconverted tries in the opening quarter. Dorrigo responded strongly in the second quarter, finding their rhythm and narrowing the score line to 15-7.

Barraba struggled to regain the same intensity through the second and third quarters, although they continued to find points out wide. Dorrigo added another try before the end of the third quarter, bringing the score to 32-12. The home side lifted again in the final quarter, rediscovering the form shown early in the match to cross for two more tries and seal a convincing 44-12 victory.

The backs showcased their pace and skill throughout the game, with Lily Walker and Leilani Tevaga demonstrating the rewards of quick hands and strong running. Emily Kelso crossed for the forwards after a powerful run through the Dorrigo defensive line, while defensively Kirra Jordan and Lily Bradshaw once again proved consistent forces whenever the opposition attacked their edge.

Tries: Lilly Walker (2), Emily Kelso, Kiah Newell, Lily Bradshaw (2), Leilani Tevaga, Addison Dixon

Conversions: Addison Dixon (2)

Points: 3 – Emily Kelso, 2 – Amie Middlemiss
1 – Lily Bradshaw

Players' Player: Leilani Tevaga

Next weekend, the men will have another bye, while the women travel to Glen Innes for a top-of-the-table clash. Be sure to get behind the women as they look to continue their outstanding season.

Country Championships Representatives:

Amie Middlemiss, Emily Kelso, Leilani Tevaga, Jemma Johnson, Charlie Norton. (Photo if you want it)



BARRABA BULLDOGS

ROUND 7 RESULTS

FIRST GRADE

| | | | |
|--------------------|---------------|-----------------------|-------------------|
| BARRABA | 16 | 46 | GLEN INNES |
| CLUB POINTS | | PLAYERS PLAYER | |
| 3 | BRIAN FULLER | | |
| 2 | DUSTY HISCOCK | | |
| 1 | LUKE WHITE | | |

LLT

| | | | |
|--------------------|-----------------|-----------------------|-------------------|
| BARRABA | 4 | 8 | GLEN INNES |
| CLUB POINTS | | PLAYERS PLAYER | |
| 3 | BROOKE MCKINNON | | |
| 2 | LIL REARDON | | |
| 1 | CHLOE THOMAS | | |



John Hawkins, Head, Canberra School of Government, University of Canberra

After two decades of declining cash use, Australians are handing over more banknotes and coins for regular purchases again, a new survey by the Reserve Bank has found. The decline in the use of physical money had accelerated during the COVID pandemic, but bottomed out between 2022 and 2025.

Around 15% of payments in 2025 were made using cash. Cash is more likely to be used for small transactions, with a quarter of transactions below \$10 paid in cash. Cash therefore accounts for a smaller proportion (8%) of the total value of payments we made than of the number of payments.

One decision that may stabilise the use of cash is that since January 2026 the federal government has mandated that most grocery stores and petrol stations must continue to accept cash.

Who are the main users of cash?

About half of Australians use cash in a typical week, the survey found. Around 7% of the population use it for more than 80% of their transactions. These high cash users tend to be older, poorer and more likely to live in regional areas than the average Australian.

Cash use is notably higher in remote areas, including in some First Nations communities where digital services are less reliable.

People making illegal transactions are also likely to be higher cash users, but this may be understated in the Reserve Bank's survey. There are \$50 billion of \$100 notes in circulation – almost 20 for every Australian. Given most people rarely see one, the suspicion is they are used and hoarded by criminals.

Among the biggest declines in cash use were for dining out and takeaway food, and transport, reflecting the increased use of card payments and digital payment methods.

Why do people prefer cash?

A third of Australians highly value being able to pay with cash. They say they would face a major inconvenience or hardship if they could not use it.

The most common reasons were they transact with sellers who only accept cash; find it simplifies budgeting; prefer it for giving money to family and friends; or have security or privacy concerns.

Another reason why consumers may prefer to use cash is to avoid surcharges imposed by many merchants for using alternatives. From October 2026, these surcharges will be banned.

Even people who rarely make payments with cash often like to keep some in their wallet. Three-quarters of Australians hold some cash in their wallets. The median amount held is \$65. The most common reason stated is concern about the reliability of electronic payment methods. The Red Cross has suggested families keep some cash, as payment systems may not operate in an emergency.

While there is still substantial demand for cash, it is becoming harder to access. There are fewer bank branches. The number of automated teller machines, particularly those owned by banks, has fallen from a peak of more than 30,000 to under 25,000, the Reserve Bank said.

What are the alternatives?

A previous survey for the Reserve Bank conducted in 2022 showed about half of all payments were made using debit cards and a quarter using credit cards. BPAY and Paypal each accounted for 2% of payments.

Data from the Bank for International Settlements show that cash in circulation in Australia is equivalent to about 4% of annual gross domestic product – about the same as in Canada and the United Kingdom. By contrast, it is less than 1% in Sweden but around 20% in Hong Kong and Japan. Other countries have also experienced the decline in the use of cash flattening out recently.

Ecological Burn Notice

Please be advised that Whitehaven Coal will be undertaking burn preparation and cool season Ecological Burns on the following Biodiversity Properties "Nindethana", "Rosevale", "Wirradale", and "Yarrowonga" between 30th March and 26th June 2026. For further information, please contact Whitehaven Biodiversity on 0488 407 000.

BARRABA COMMUNITY NEWS

COMMUNITY OWNED AND EDITED

Published by Community College Northern
Inland Inc.

Cnr. Alice and Fitzroy St Barraba

Contacts: Bronwyn 0447 165 008 or Office:
67821662

Email news@barrabacommunitynews.org.au

Printed on site at the Community College. Free
publication by email or collection from local
Barraba main street businesses



PHIL DENYER
MECHANICAL REPAIRS
(02) 6782 1107

WINTER SPECIAL

MITSUBISHI HEAVY INDUSTRIES AIR CONDITIONING

KEEP WARM THIS WINTER

PH: 0410 522 967
BARRABA BASED AND WILL TRAVEL TO SURROUNDING AREAS

BK ELECTRICAL + AIR CONDITIONING
ONE TRADESMAN WITH BOTH ELECTRICAL & REFRIGERATION LICENSES

| | | |
|--|---|--|
| 2.5kw Mitsubishi Heavy Industries A/C Fully installed - Back to Back \$2270 | 5 kw Mitsubishi Heavy Industries A/C Fully installed - Back to Back \$2870 | 7.1kw Mitsubishi Heavy Industries A/C Fully installed - Back to Back \$3350 |
|--|---|--|



WARDS PLUMBING

Lic No. 306630C

- Plumber
- Drainer
- Gasfitter
- Polywelder
- Roof Plumber

Ph0408117358 wardsplumbing@bigpond.com

Thick, Chewy, and Loaded with Chocolate & Hazelnuts

Ingredients

- 75 gram Butter room temperature
- 100 gram Sugar
- 75 gram Brown sugar
- 1 pcs. Egg
- 150 gram Wheat Flour
- 4 gram Vanilla Sugar
- 3 gram Baking Soda
- 100 gram Dark chocolate coarsely chopped
- 50 gram Hazelnuts coarsely chopped

Instructions

1. Preheat the oven to 200 degrees Celsius.
2. Whisk butter, sugar, and brown sugar together well – until it becomes light and fluffy.
3. Whisk in the egg.
4. Add all the remaining ingredients to the bowl and whisk at low speed until you get a firm and coherent dough.
5. Place small balls of dough (about the size of walnuts) on a baking sheet with parchment paper. They spread out, so make sure there is enough distance between them.
6. Bake for about 8 minutes, take them out and let them cool on a baking rack. They only become completely crispy once they have cooled.

