



BARRABA COMMUNITY NEWS

COMMUNITY OWNED AND EDITED

FREE LOCAL NEWSPAPER

Wednesday 3rd December 2025



BARRABA RSL & RECREATIONAL CLUB LTD

Phone 67821379

For the information of
members and guests.

THIS WEEK

FRIDAY 5th DECEMBER

Meat Raffles. Tickets on sale from 6pm.
Membership Draw \$1200

SATURDAY 6th DECEMBER BINGO

SUNDAY 7th DECEMBER

**Aircooled Assembly Raffles on sale from
12md. Drawn at 1.30pm.
Membership Draw \$2000 (4 draws)**

Happening Soon

Friday 12th December

Ham Raffles

Over 50 prizes up for grabs

BISTRO HOURS

Phone 0427330808

DINE IN OR TAKEAWAY

DAILY BLACKBOARD SPECIALS AVAILABLE

ALSO PIZZAS MADE TO ORDER

**Monday/Tuesday/Wednesday—Closed
Thurs/Fri/Sat Lunch 12-2pm Dinner 6pm
Sunday 12-2pm**

Medical Centre Notice

The surgery will be closed from Monday 22nd December 2025 until Monday 29th December 2025.

Reopening on Tuesday 30th December 2025 @ 11.30am.

Also, we will be closed on Thursday 1st January & Friday 2nd January 2026 and will reopen Monday 5th January 2026 @ 11.30am.

If you require scripts before the closures, please call the surgery to make an appointment.

If you require medical attention, please present to the Barraba Hospital or in an emergency call 000.

IT'S ON AGAIN!!!!

Aircooled Assembly Inc Christmas Light Competition is on again.

Competition will commence on December 1st and winners will be announced and awarded on Saturday December 20th during our annual Santa Lollie run. Santa will depart from the Barraba RSL & Rec Club after 4pm and work his way through the streets of Barraba NSW gifting bags of lollies courtesy of Aircooled Assembly Inc, so keep an eye out.

It doesn't matter if your display is big or small, if you put in the effort, you could WIN!!!!

Drag those lights out, untangle them and get them up to be in the running.

Good Luck!





Hospital Auxiliary Happenings.

Merry Christmas everyone from the Barraba UHA. Thank you all for your support in 2025 and we look forward to what 2026 brings.

The Auxiliary members enjoyed Christmas lunch on the 28th November, at the Barraba Bowling Club and welcomed Karen Cupitt to the group.

The Barraba Potters and Craft Guild Sunday Sewers have donated 2 boxes of beautiful craft items to the Barraba Hospital Auxiliary for fundraising activities. Thank you, ladies, for your generosity.

The next meeting will be on the 7th of February at 10am in the Day Centre. New members welcome.

Publicity Officer
Patti Crowley



Tamworth Regional Council Christmas Holiday Hours

Council's general operations, with the exception of essential services, are to be closed during the Christmas and New Year period 2025/2026.

Council operations and Customer Service Centres will close at 12 noon on Wednesday **24th December 2025**, and re-open for business at normal times on Monday **5th January 2026**.

The Tamworth Visitor Information Centre will be closed for public holidays only. If your venue will be open during the public holidays, please let us know.



History Notes

A wonderful reaction to last week's notes. How nice it is to find so many people keeping in touch for all these years. A big thank you to those who made the topic suggestion.

This week I am still working on the Horton Valley as the result of an enquiry to one of our members. There are a couple of history articles available. In June 1908 The Town & Country Journal recorded the journey of a reporter visiting one of the proposed routes for the railway extension from Barraba north to join up with the Moree to Wyallda extension.

The reporter was accompanied by a Barraba citizen to the Horton village who handed him over to James Smith, owner of Oakvale, a property of 2300 acres about one and a half miles out of the village of Upper Horton.

The visitor remarked on visiting Gainer's Hotel and seeing the Horton River winding down the valley "like a silver ribbon" with homesteads dotted here and there.

The next morning James Smith drove him down to Eulourie to meet Mr King. Here there were tales of mail coming down from Piedmont once a month in the early days and now four times a week was better but could be improved. Growing wheat was near impossible to get it out to market but a railway would improve that. Stock for sale had to be driven out of the valley on horseback.

Across the river at The Plain, they met up with Frank Mack who was growing wheat and shipping it 36 miles to Gravesend and paying 2 shillings per bag of wheat for freight. This price was hardly worthwhile, and Mr Mack was thinking of a change to lucerne.

Unfortunately, this is where the magazine has been torn but I imagine there was plenty of support from the valley farmers for the railway.

The second source of history is a past resident who wrote down his memoirs of growing up in the Horton Valley with his mother and step-father at the beginning of the 20th Century – it is very long and contains lots of names of former residents – there are references to the early Caroda Post Office floods, early farming machinery, early residents and properties.



The Hon. Barnaby Joyce MP

Member for New England

Statement

27 November 2025

After 30 years with the National Party, and with a very heavy heart for what is a momentous decision, I am resigning from the Party.

As I have stated, the relationship with the elected Leadership of The Nationals in the House of Representatives has become dysfunctional and discordant over a long period of time and behoves neither to continue on in this form.

I have been asked numerous times both directly and indirectly to leave, so I suppose I shall now do that. Since initially announcing this five weeks ago, there has been no communication with either the Leader or Deputy Leader of The Nationals apart from a 90 second phone conversation.

Oddly enough, none of this is really important in the scheme of things. What is vastly more important is how do we stop the destruction of our rural land with intermittent power precincts? How do we help the poor with the cost of living that is beyond their capacity to pay for? How do we prepare for a totalitarian regime such as Communist China that is becoming increasingly provocative towards Australia every day? How do we get doctors into regional towns and hospitals? How do we build the infrastructure that builds the strength in the nation's balance sheet?

For me being a discordant voice in the furthest corner of the back bench of the Coalition in Opposition is not giving me the capacity to give my best endeavours to have an effect on this.

I acknowledge that this will create great hurt for so many, and I am so deeply sorry for that, but I hope over time people realise that it wasn't as dramatic as first thought, the world moves on and, after a period of reticence, if we were friends before we will become friends again.



**GRAB A
GRANT THIS
SUMMER**

Local not-for-profits, schools, and councils are encouraged to apply for the popular Infrastructure Grants Program (Clubgrants Category 3).

Member for Tamworth Kevin Anderson said the program had been delivering funds to important community projects across the electorate. "Clubgrants invests in the projects that make a real difference to our communities. Sporting facilities, major art installations, and important community projects have all been funded under this program. Funding can be used for a range of projects including upgrading local halls, improving sporting facilities, public art installations, community accessibility upgrades, and infrastructure designed to make our region more liveable. The Quirindi Silo Art, paths at Tamworth Gold Club, a refurbishment of the Gunnedah Swimming Pool roof, upgrades at Tamworth's baseball facilities, and shade sails at Tamworth athletics fields are great examples of projects that have been funded by this program. I want to see our region continuing to move forward so I'm encouraging any local organisations to take advantage of this opportunity and get your applications in soon."

The NSW Infrastructure Grants Program reinvests profits from clubs into important community projects. Funding is available under four categories:

- **Arts and Culture** (grants of between \$50,000 and \$200,000)
- **Community infrastructure** (grants of between \$50,000 and \$250,000)
- **Disaster readiness** (grants of between \$50,000 and \$200,000)
- **Sport and recreation** (grants of between \$50,000 and \$300,000)

"This program is about investing in our community and delivering on the infrastructure upgrades that matter," Mr Anderson added. "I'll continue to push for more funds for our region, so our local groups get their fair share of this important funding program."

Applications are open now and close on Monday 15 December 2025. More information is available online at <https://www.nsw.gov.au/grants-and-funding/clubgrants-category-3-fund>



Here is an overview of outcomes from the Extraordinary Meeting of Tamworth Regional Council held Thursday 27 November 2025:

- Councillors reviewed and discussed the 2024/2025 Annual Report. The report outlines Council's achievements in implementing the 2023-2025 Delivery Program and statutory requirements under the Local Government Act 1993. The report also includes the audited financial statements and will be available on Council's website in the coming days.
- Councillors reviewed the first Quarterly Budget Review Statements for the 2025-26 financial year. The report indicated Council needs to take steps to improve the discretionary General Fund Reserves. Whilst this is not considered urgent, Council will be reviewing different scenarios to determine feasible options for future budget plans.
- Councillors have approved the request to contribute \$35,000 per year, as part of a three-year agreement, to NSW Country Rugby Union to bring the NSW Senior Country Championships to Tamworth. It is estimated a total of 2660 visitors will attend the three-day carnival which will in turn have an economic benefit of more than \$840,000. The financial partnership positions Tamworth as the official host city and brings with it strong destination branding across event naming, signage, media and streaming.

For more information, see the full reports at www.tamworth.nsw.gov.au/business-papers



Find a battery drop-off near you

One battery in a bin can spark a fire. Find a safe place to drop off your used batteries.

To safely dispose of your loose batteries:

1. **Tape the terminals** with clear, sticky tape to reduce the risk of fire
2. **Keep them safe** in a ventilated, glass container
3. **Drop them off** at your nearest location

(Nearest locations to Barraba: are all in Tamworth – lots of places there. HEY, TAMWORTH REGIONAL COUNCIL. How about a drop off point in Barraba?)

TAMWORTH REGIONAL COUNCIL - EVERYDAY WATERWISE GUIDELINES

As we head into the summer months, be mindful to do your best to save water.

- Cover your pool
- Water gardens in line with the Everyday Waterwise Guidelines
- Choose drought-tolerant plants

Together, we can reduce high consumption and secure Tamworth's water future.



The Everyday Waterwise Guidelines are:

1. **Only water the garden, including using sprinklers, before 10 am or after 4 pm.** This avoids watering during the hottest part of the day, when water wastage and evaporation is high.
2. **Trigger nozzles to be used on all handheld hoses.** Trigger nozzles provide more control over water flow and reduce wastage.
3. **Avoid hosing down hard surfaces, such as concrete, paths and driveways.** Use a broom, leaf blower, or if water is required, use a high-pressure cleaner or water efficient nozzle.

The Everyday Waterwise Guidelines, which replace the previous Permanent Water Conservation Measures, are not enforceable, but all residents are encouraged to reduce their water usage in line with the guidelines to reduce the impact of the drought going forward.

Council has a 6-level water conservation plan known as the Drought Management Plan for the Tamworth Region, which was adopted on October 10 2023. The plan sets out clear trigger levels for restrictions to be activated across different centres in the Local Government Area to make it easy for residents and visitors to understand exactly what water use rules apply to them.

The levels are based on dam levels, flows in streams, and bore levels for all seven water supply schemes operated by Council. For more information on Water Restrictions, definitions, and our water sources visit www.tamworth.nsw.gov.au/water-and-wastewater

Thank you to everyone who does their bit to help keep the Tamworth region water wise.



CHRISTMAS CAROLS IN BINGARA

Carols at Twilight Sunday 14 December, 6:00–7:30pm

Held at Bingara Anglican Church

Join us for a warm and festive community evening on the grass as we celebrate the rich meaning of Christmas.

The evening begins from 6:00pm with festive tunes, dinner and free kids' activities — Christmas face painting, glitter tattoos, mini gingerbread house decorating & festive Christmas play dough and craft.

At 6:30pm, we'll gather on the lawn for a relaxed, picnic-style time of Christmas carols, led by Bingara's own The Local Vocals. There will also be special moments throughout the carols just for kids, including a friendly visitor who will help share the Christmas story (with lollies for the kids!).

Pack a picnic, snacks or Christmas treats (no alcohol), or purchase dinner from the BBQ provided. Bring along a chair or picnic rug and settle in for a beautiful twilight celebration with family, friends, and our Bingara community. Free entry. Free kids' activities. A festive evening for the whole community.

CATHOLIC CHURCH TIMES
Barraba 1st Sunday of the month, Saturday evening
Mass 6pm. All other Sundays 9am
Christmas Day Mass 9am

BARRABA UNITING CHURCH NOTICES
Sunday 7th December service at 8.45am.
All welcome.

ANGLICAN CHURCH TIMES
St Laurence's Barraba
Sunday service at 10.00am

Christmas Services:

Woodsreef: Sunday 21st December, 11:30am.

Bring a plate of food to share.

Bereen: Sunday 21st December, 6pm.

Bring a plate of food to share.

St Laurence's:

Sunday 14th December, 5pm. Carols on the church lawn (including BBQ and kids activities).

There will be no service at 10am.

Sunday 21st December, 10am, Regular Sunday Service.

Wednesday 24th December, 8pm, Traditional Communion Service.

Thursday 25th December, 9am, All ages Christmas Service.

BARRABA COMMUNITY NEWS

COMMUNITY OWNED AND EDITED

**Published by Community College Northern
Inland Inc.**

Cnr. Alice and Fitzroy St Barraba

Contacts: Bronwyn 0447 165 008 or Office: 02 67821662

Email news@barrabacommunitynews.org.au

Printed on site at the Community College. Free publication by email or collection from local Barraba main street businesses



**Innovation changing the way we manage
bushfire risk**

**Bringing together technology and teamwork to
protect regional, rural and remote New South
Wales**



Advancements in drone technology allowing Essential Energy asset inspectors to find network defects early

As bushfire seasons become longer and more unpredictable, Essential Energy is turning to new technology and research partnerships to help manage the risks communities face across regional, rural and remote New South Wales. Once an anomaly but now a regular part of life, storms, floods, fires and extreme weather events have challenged networks to evolve their approach to keep the network safer and more reliable.

Advanced bushfire risk modelling, developed in partnership with the University of Melbourne and electricity networks across New South Wales, gives us a far clearer picture of where bushfire danger lies, according to Essential Energy's Network Risk Strategy Manager, Ian Fitzpatrick.

"This technology brings together data on past bushfire events, weather patterns, vegetation and network characteristics to estimate not only where a fire is most likely to start, but what the impact could be on people, property and the environment if it spreads. So far, thanks to this technology, we've been able to pinpoint how the fire risk varies across our vast network," Ian says.

For example, along the Mid North Coast, where the natural environment is dense, our models show the bushfire risk is higher than before. However, our learnings allow our teams and crews to target the areas where work is needed most - trimming vegetation and repairing assets before the summer heat turns small hazards into bigger problems.

Beyond the modelling, it's important we're able to take a closer look at the network, which is being made more efficient due to our evolving drone and helicopter fleet. Where previously low flying small planes were used, drones and helicopter mounted cameras are now at the forefront, providing sharper, more detailed views in more areas across the network.

Essential Energy is also trialling artificial intelligence (AI) to review inspection photos, speeding up defect identification and enabling faster response times. In addition, new pole mounted sensors called Early Fault Detection (EFD's) are being installed to alert for emerging faults. This technology means we can move from simply finding problems to fixing them sooner, reducing bushfire risk and improving reliability for communities.

Looking ahead, we will continue to invest in new technology and build on our partnerships locally, statewide and internationally to improve the safety and reliability of the network for our communities. By working with all NSW electricity networks and drawing on the expertise of the University of Melbourne, we're ensuring a consistent, best-practice approach to bushfire risk. Our team also collaborates through national and international forums like Energy Networks Australia (ENA) and the International Wildfire Risk Mitigation Consortium (IWRMC).

"Collaboration is key to tackling bushfire risk. Our network stretches across some of the most diverse and challenging landscapes in New South Wales. With bushfire seasons growing longer and extreme weather events becoming more frequent, we can't rely on old ways of working. By sharing knowledge and harnessing new technology, every year we're improving how we manage risk and improve resilience across the network," Ian says.

To learn more about how Essential Energy is using technology and partnerships to keep communities safe, read our full Bushfire Preparedness and Performance Report. The report offers a detailed look at our latest initiatives, results, and plans for the future.



Urgent action needed to tackle declining immunisation rates

The Australian Medical Association is calling for immediate action to combat vaccine hesitancy and reverse declining immunisation rates across the country.

The AMA's new report — From coverage to concern: a policy analysis of Australia's immunisation decline — highlights a worrying drop in vaccination rates across child, adolescent and adult programs, as well as seasonal flu vaccination.

AMA President Dr Danielle McMullen warned misinformation and anti-science sentiment were eroding public trust. Other contributors to a decline in vaccination rates include vaccine fatigue and competing demands on time. "Immunisation is the most successful and cost-effective health intervention globally, preventing between two and three million deaths a year," Dr McMullen said. "We are seeing increasing global conversations about vaccine hesitancy, and it is putting lives at risk. Unfortunately, Australia is not immune, and it is deeply concerning to see declining rates here, especially among children."

Vaccines have saved countless lives in Australia, reducing deaths from vaccine-preventable diseases by 99 per cent. Yet coverage has slipped in recent years, threatening public health and straining the healthcare system.

Dr McMullen said declining vaccination rates had far-reaching consequences, with preventable diseases re-emerging, driving up hospital admissions and stretching emergency departments. "Our hospitals are already in logjam, operating at or above capacity, and yet nearly 10 per cent of preventable admissions are linked to vaccine-preventable illnesses," Dr McMullen said. "Declining coverage doesn't just strain our emergency departments — it risks the re-emergence of serious diseases like measles, with life altering complications, and even undermines Australia's world leading success in turning the tide on cervical cancer through HPV vaccination. We cannot afford to see that progress undone. We must act now to strengthen public health initiatives and lift vaccine coverage across all age groups. Because vaccines aren't just about stopping a sniffle — they are about saving lives."

The AMA is urging government to rebuild trust in vaccines through general practice.

"General practitioners are uniquely placed to help turn the tide," Dr McMullen said. "They are trusted voices in their communities and play a pivotal role in encouraging vaccination."

To support this, our report highlights the need for greater investment in general practice, including increased funding for the Workforce Incentive Program, to expand access to immunisation services through GPs and practice nurses. Dr McMullen urged Australians who were unsure about vaccinations to seek advice from their family GP.

"A simple conversation with your GP can protect your family, strengthen your community, and save lives."

BARRABA JUNIOR TOUCH THANKS MANILLA MASONS

Barraba Junior Touch Football Association is in our second season of affiliation with NSW Touch and we are in a position of strength thanks to the amazing support of a number of local businesses and community organisations.

Today, we would like to highlight and thank Manilla Masonic Lodge for their sponsorship of Barraba Junior Touch; last year Manilla Masonic Lodge helped us to cover affiliation costs with NSW Touch, and this year their kind donation will go toward costs associated with Buzz Round activities, referees and our presentation afternoon.

We are very grateful to Manilla Masonic Lodge for their ongoing support of our small Association, allowing us to continue to provide the children of Barraba with great opportunities to play at a local and representative level.



Brian Barrass representing Manilla Masonic Lodge with Barraba Junior Touch Treasurer, Cint Russell and President, Bindy Abell.



Pay the correct entitlements over the holidays

Getting pay rates and leave entitlements right during summer isn't just good for keeping your employees happy – it's the law.

1. Planning a shutdown? Check if you can direct staff to take annual leave.
2. Know the rules about annual leave requests.
3. Confirm your payroll system won't deduct public holidays from leave balances.
4. Work out overtime needs using the correct rates.
5. Share if pay day will temporarily change due to public holidays.

Need more help? Call the Employer Advisory Service for free advice.

Free resources to help your business grow with confidence

It's now easier to access high-quality resources and tailored support to help you:

- build your team
- expand online
- discover opportunities to grow.

You'll find guidance and information on the new Manage and grow your business webpage from the Service NSW Business Bureau.

Explore online resources or book a call to get one-on-one support in person or on the phone.



Free courses to run your business better

You can fill a knowledge gap in as little as 12 minutes. Upskill today with more than 30 free online short courses on the Essentials to strengthen your small business educational hub.

There are courses suitable for new, growing and established businesses. Subject areas include:

- managing cash flow, debt, income and expenses
- taxes and superannuation
- record keeping
- hiring and paying workers
- cybersecurity.

Borrowing from alternative lenders

Before you sign up to a loan from a non-bank lender, it's vital you understand everything you're committing yourself to.

Speak to a free independent financial counsellor first. They can help you compare the options, navigate the situation and steer clear of financial pressures down the track.

There are also tools and resources to help you understand loans, manage cash flow and avoid high-risk finance arrangements.

Mandatory tests to avoid hearing damage

If your workers are required to use earmuffs, earplugs and other equipment to protect them from loud noise, you need to have their hearing tested by 31 December this year.

It's your legal responsibility to organise and pay for the tests before the deadline. It's also up to you to arrange follow-up monitoring tests at least every two years.

Find a testing clinic in your area.



Get personalised support for your business

Service NSW Business Bureau can help you with:

- tailored support to start and grow your business
- government programs and resources
- licences, permits and more

service.nsw.gov.au 13 77 88

Golf Notes



Kim Sweeney won the chook with 23 points - well done and check your handicap! Balls went to Dan Lott, Penny Blomfield and Lachy Smith with 21 points and Bill Simpson and Campbell Tonkin with 20.

In the teams comp "No Hoppers" are leading with 152 points from "Geriatrics" and "Stock & Crop" on 147, "Over The Hill" 145, "Family Affair" 144, "The Bogey Men" and "Hackers" 139, "New and Old" 137, and "The Forgetfuls" and "Eagle Hunters" on 134.

The course is letting up a little with a bit more run.
Happy golfing



Maddy McAllister, Senior Lecturer - Maritime Archaeology, James Cook University

In 1791, the British naval vessel HMS Pandora sank on the Great Barrier Reef while pursuing the mutineers from the HMS Bounty. The mutineers, led by Christian Fletcher, staged an uprising against their captain Lieutenant William Bligh in 1789, forcing Bligh and his supporters out to sea in a launch.

This infamous act sent the fugitives fleeing across the Pacific, and set the stage for Pandora's ill-fated pursuit.

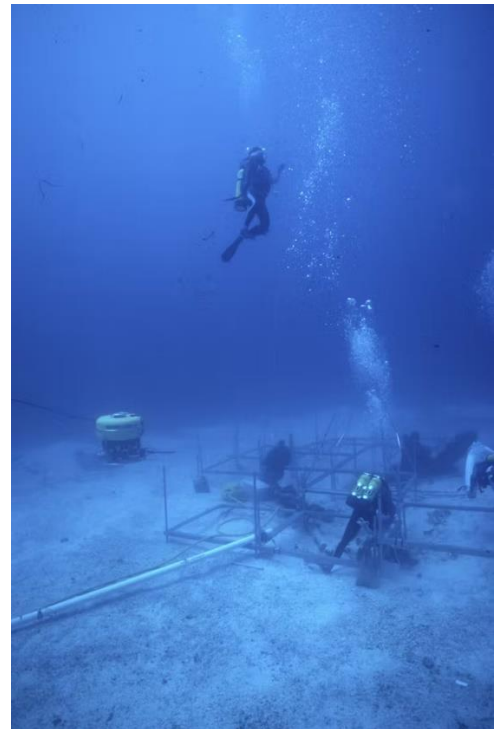


A 1790 work by Robert Dodd depicts the mutineers fleeing Bligh and his loyal crew during the Bounty mutiny.

Wikimedia/National Maritime Museum

When archaeologists first descended onto Pandora's wreck in 1979, they weren't just uncovering a ship. They were opening a time capsule of empire, exploration and human endurance. Thousands of artefacts were slowly excavated from the frigate over the next 20 years.

An undersea photo shows two divers at a ship excavation site.



A 1984 photo of archaeologists excavating the wreck site. Queensland Museum

For decades, these recovered artefacts remained a sleeping archive of untapped scientific, cultural and environmental knowledge. But researchers are starting to study the collection again using fresh eyes and new tools.

The story of Pandora reveals a deeper truth about archaeology: discovery doesn't end with the dive, it lingers in troves still sitting on museum shelves, waiting to be studied.

A moment sealed in time

The British Navy dispatched HMS Pandora in 1790 to hunt down the Bounty mutineers. A year later, the ship struck the Great Barrier Reef and sank, taking 35 men with it.

When the wreck was rediscovered in 1977, it became the focus of one of Australia's most ambitious archaeological projects. Over nine field seasons between 1979 and 1999, Queensland Museum archaeologists recovered more than 6,500 artefacts.

These ranged from the ship's copper fastenings and rigging blocks, to surgeon's tools, creamware crockery, and Polynesian artefacts collected during encounters with Pacific Islander peoples.



An ivory syringe owned by HMS Pandora's surgeon, George Hamilton. Queensland Museum

Each object was meticulously recorded and conserved, creating one of the world's most complete shipwreck assemblages from the 18th century. Despite its richness, however, much of the collection has never been studied in depth, beyond the initial photographing and describing.



A selection of ceramics retrieved from the HMS Pandora. Queensland Museum

The dormant years

Pandora was a triumph in the heyday of Australian maritime archaeology (the 1980-1990s). It put Queensland on the global map for shipwreck science, galvanised local communities, and even inspired the construction of a museum in Townsville – today known as the Queensland Museum Tropics – to house its finds.

By the time the final season on HMS Pandora wrapped up in 1999, the excitement that had fuelled two decades of fieldwork was fading. As funding dried up, attention turned towards consolidating the wealth of artefacts already recovered, and telling the ship's story through the museum.

The museum currently displays 248 artefacts – about 4% of the total collection. By comparison, the British Museum estimates only about 1% of its eight million objects are exhibited at any one time.



Some of the Pandora collection, packed away in storage. Queensland Museum/Author provided

Re-reading the past

Since the early 2000s, only a small fraction of the Pandora collection has been studied extensively. The thrill of excavation often outpaces the slower, less glamorous phase that follows: years of conservation, analysis, interpretation and publication.

Renewed research efforts are now re-examining the collection using up-to-date scientific and archaeological approaches.

One example is a 2023 study by myself and my colleague Alessandra Schultz, which involved carefully interpreting some of the smallest objects from the collection: the assemblage of intaglios and seals.

Intaglios are tiny engraved gems or glass pieces bearing motifs or classical images. They were once used as jewellery or personal seals, and served as sentimental keepsakes or tokens of moral protection. During long, dangerous naval voyages, they were carried for reassurance and good fortune.

Nine intaglios were recovered from Pandora. Many depict classical virtues, such as "hope" or "truth". We studied them to better understand the mindset of Pandora's crew as they set out to hunt down criminals.

The motifs themselves drew on the classical past: Atlas or Hercules symbolised endurance and burden; Hannibal evoked courage in adversity; Hope with an anchor embodied faith and safe return; Veritas stood for truth and integrity; and the figure of Hippocrates suggested wisdom and healing.

Collectively, they hint at how Pandora's officers used classical imagery to express duty, morality and hope in times of uncertainty.



One of the intaglios depicts Hope personified with an anchor (MA7903). Queensland Museum

These personal European-made items were found alongside artefacts gathered from various encounters in the Pacific, suggesting the crew had a fascination with collecting “curiosities” (a popular pastime in 18th century Europe).

This overlap reveals a complicated picture of colonial exploration in which personal interests, cultural exchange and empire were deeply intertwined.

Scientific developments

We’ve made noticeable technological advances since the Pandora collection was first recovered. In particular, our ability to analyse the chemical composition of artefacts has vastly improved since the 1990s.

Using a technique called environmental scanning electron microscopy, we can take minute samples from shipwreck artefacts to understand exactly what they’re made of.

Applying this technique to seemingly boring artefacts, such as bolts and ceramic fragments, can give us valuable data to match to industrial advances throughout history, which would allow us to trace these objects’ origins. We hope to apply this technology to the broader Pandora collection.

This collection carries deeply human stories. It’s time we dived in once again to retrieve them.

Linguine with walnuts and Anchovies Recipe



This dish is from the Amalfi Coast and I was thrilled to find it. I’m always looking for new simple pasta dishes and southern Italy is a great hunting ground. Anchovies and walnuts seem like an odd pairing, but I also use them to make a chunky relish (for lamb and for griddled aubergines and roast peppers).

Timings Prep time: 10 minutes, Cook time: 15 minutes

Serves 2

Ingredients

165g linguine
3 tbsp extra-virgin olive oil, plus extra to drizzle
2 garlic cloves, crushed
½ tsp dried chilli flakes
50g walnuts, roughly chopped
8 good-quality
cured anchovies, roughly chopped
½ tbsp finely chopped flat-leaf parsley (optional)
grated pecorino or Parmesan, to serve

Method

Cook the linguine in a pan of salted boiling water. Meanwhile, heat the olive oil in a sauté pan and over a medium-low heat gently fry the garlic, chilli flakes and nuts for a few minutes. Don’t let the garlic brown.

Add the anchovies and press them in the pan with the back of a wooden spoon. They’ll melt in the heat.

Just before the pasta is ready, add 125ml of the cooking water to the sauté pan, then drain the pasta and add that to the pan too. Finish cooking the pasta in the sauté pan until it is al dente. The cooking water will reduce to form a sauce with the other ingredients.

Add the parsley (if using) and season. You can add another slug of extra-virgin olive oil if you want to. Serve with Pecorino or Parmesan.

Love Local



Lawn Mowing

Yard maintenance, rubbish removal, weed spraying.

Pensioners and DVA discounts on provision of appropriate cards.

Phone Scott, 0428941979, for an obligation free quote.

KEEP COOL THIS SUMMER
PH: 0410 522 967
BARRABA BASED AND WILL TRAVEL TO SURROUNDING AREAS

BK ELECTRICAL + AIR CONDITIONING <small>ONE TRADESMAN WITH BOTH ELECTRICAL & REFRIGERATION LICENSES</small> 2.5kw Mitsubishi Heavy Industries A/C <small>Fully Installed - Back to Back</small> \$2270	5 kw Mitsubishi Heavy Industries A/C <small>Fully Installed - Back to Back</small> \$2870	7.1kw Mitsubishi Heavy Industries A/C <small>Fully Installed - Back to Back</small> \$3350
---	---	--



Phil Denyer Mechanical Repairs will close for Christmas on the evening of Friday 19th December 2025 and will re-open Monday 5th January 2026.
Ph (02) 6782 1107.

Rod Bonner
Your local Plumber, Drainer, Gasfitter and Handyman
Lic No. L8791
plumberdrainer@gmail.com
Text is best 0447 052 140

Fast Glass and Glazing Pty Ltd

Nathan Benjamin
Glazier
0480504620 | fastglassglazing@gmail.com

WARDS PLUMBING

Lic No. 306630C

- Plumber
- Drainer
- Gasfitter
- Polywelder
- Roof Welder

Ph0408117358 wardsplumbing@bigpond.com



Only 3 weeks to Christmas, that means only 2 weeks to the last edition of Barraba Community News for 2025. That's right, our last BCN for 2025 will be 17th December.

So, if you would like to send your customers, members or clients a 'Christmas/ New Year/holiday closure dates' message please contact us as soon as possible to book your space.

Cost will be as follows;

4cm x 8cm = \$20.00 6cm x 8cm = \$25.00

8cm x 8cm = \$35.00

Bigger is always better and we're happy to provide you with a quote for your preferred size.

Contact news@barrabacommunitynews.org.au