



# BARRABA COMMUNITY NEWS

COMMUNITY OWNED AND EDITED

**Wednesday 2<sup>nd</sup> March 2022**



Health  
Hunter New England  
Local Health District

## **BARRABA COVID-19 VACCINATION CLINIC**

Barraba Hospital

**Pfizer Vaccination Clinic**

**Appointment Essential**

**Paediatric Pfizer Vaccination Clinic 5—11 years**

**Tuesday 15th March and 10th May 9.30am to 3pm**

**Please phone Barraba MPS, 67822500, during office hours to register**

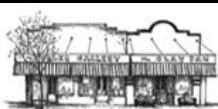
Open to those aged 5 to 11 years

Children MUST be accompanied by a parent/guardian aged over 18 years

Wear a mask and bring your Medicare Card and ID (licence, student ID)

**Contact: Barraba Hospital**

**Phone: 67 822500**



## **Trip to Bingara Living**

### **Classroom Sustainable Garden**

Includes a lecture on Organic Gardening

Bus \$20 PP for 13 or more people plus \$5 entry per person

**Thursday 31 March, bus departing 9am return 2pm**

There will be access to kitchen for making morning tea but bring a mug, coffee, tea, milk. Bring your own lunch or buy in town.

If time there is a new craft shop in town that will be open.

Contact Bronwyn 0447165008 or Pat Penna 0438219030 to book

Payment must be made in advance so we can confirm the numbers



*Welcome to*  
**Barraba RSL**  
and Recreation Club

**BARRABA RSL & RECREATIONAL CLUB LTD**

Phone: 67821379

**For the information of members and guests**

**WE ARE A COVID-19 SAFE CLUB**

**ALL NSW HEALTH REGULATIONS APPLY**

**THIS WEEK:**

**THURSDAY: 11AM-**

MULTISCREEN DRAW-SUSPENDED UNTIL FURTHER NOTICE

**FRIDAY: 11AM-**

MEAT/VEG RAFFLES 6PM

EXTRA DRAW AFTER EACH RAFFLE FOR A BONUS PRIZE

MEMBERSHIP DRAW \$1300

**SATURDAY: 10AM-**

**SUNDAY: 10AM-5.30PM**

ANGLERS CLUB RAFFLES 1PM

MEMBERSHIP DRAW \$1200

**MONDAY: CLOSED**

**TUESDAY: 11AM-5.30PM**

BINGO 11AM

**WEDNESDAY: 11AM-5.30PM**

**HAPPY HOUR: 11am-1pm Wed & Fri**

**BISTRO HOURS**

Phone 0427330808

CLOSED MON/TUES/WED

**THURS/FRI/SAT: LUNCH 12-2PM DINNER 6-8.00PM**

**SUNDAY: LUNCH 12-2PM**

**DINE AND DISCOVER VOUCHERS ACCEPTED**





## *Congratulations*

## *Congratulations*



**House Captains** L-R front row: Riley Phillips, Aden O'Dell and Cody Simpson

Middle row: Cassidy Graves, Paige Phillips and Mrs King  
Back row: Mr Sullivan and BarraBull

**Class Captains** L-R front row: Pippa Halloran, Annabel Kanno and Billy Randall.

middle row: Lachlan Phillips, Grace Phillips and Bailey Jobson

back row: BarraBull and Mr Sullivan

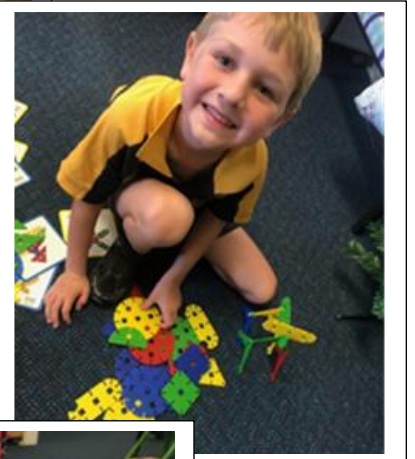
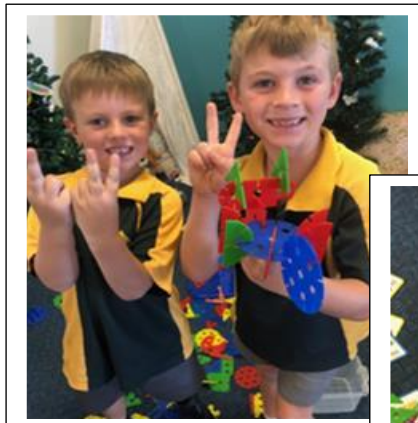
### **Stem Challenge with Mr Sweatman**

Students created and designed masterpieces with a choice of 22 different materials.

## *Congratulations*



**SRC Captains** L-R front row: Noah Lowe and Jesse Chapman  
row 2: Ali Coombes, Zac Hain and Hugh Crowley  
row 3: Lachie Rodger, William Fitzgerald  
row 4: Mr Sullivan, BarraBull and Miss Hook







### Did you know?

The date on Tuesday 22 February 2022 was both a palindrome and an ambigram? The date can be read the same from left to right, from right to left AND upside down!

22022022

'Twosday' 22-2-22 so Tutu's were the flavour of the day.

*Pictured above Barraba Central School staff L-R: Lorraine Howarth, Kim Sweeney, Karen Hughson, Paul Teunis, Patrick Sullivan, Jenny Middlemiss, Bobby Coombes, Georgie Hook, Jennylyn King and Jess Harris.*





## PREPARATIONS ARE UNDERWAY FOR THE 2022 BARRABA SHOW





## BARRABA BUSINESS'S SUPPORT THE SHOW WITH A 'SUNSHINE' THEME



Barraba Show Society  
Presents  
**The Young Farmers Challenge**

Proudly run by our Barraba Young Woman Brook Smith

**Senior Young Farmer (over 18), Junior Young (12-18 years) Farmer and Tiny Farmers Challenges (Under 12)**

Sunday 6th March at 10AM in front of the Grand Stand.

Teams of 4 people

Entries to prior to Sunday. Entry forms can be picked up from the Secretaries Office or available online.

Entry \$8 per team (\$2 per person in the team)

**Winning team in each division takes all**

Sponsored by Two Arrows Grazing

A new fun event on Sunday at 10am will be the Young Farmers Challenge for teams of 4, in senior (over 18yrs) junior (12-18yrs) and tiny (under 12yrs) categories, testing their skills with swag rolling, whip cracking, dry weet-bix eating, electric fence construction, hay bale stacking & wheel barrow race. Why not get together and make up a team! Entry forms available on the show website, and the secretary's office. \$8 per team entry fee, winner in each division takes all. All equipment will be supplied.

# **Barraba Show this weekend.**

**4<sup>th</sup>- 6<sup>th</sup> March 2022**

Preparations for the 2022 Barraba Show are in their final week. All hands were on deck over the weekend and during the week leading up to the show to prepare pavilions, grounds and exhibitor areas ready for exhibitors & visitors to Barraba. The grounds are a picture after the recent rain and continual effort of a very dedicated lawn mowing volunteer.

## **LODGING OF ENTRIES**

Early entries may be lodged in person at the Secretary's Office, Barraba Showground 10am – 4pm Monday 28<sup>th</sup> February – Thursday 3<sup>rd</sup> March 2022

Show Office Ph: 0447 222 347

## **STUD CATTLE**

Entries close 2nd March 2022 All entries to cattle secretary: [mctswalker@bigpond.com](mailto:mctswalker@bigpond.com) Tammy Walker PH: 0429 310 479 or 02 6782 7378 Entry form on website: [www.barrabashow.com.au/forms](http://www.barrabashow.com.au/forms) Please send in completed waiver form, with entries. Barraba Showgrounds PIC. NG507971

## **WOOL**

Fleeces can be left at the show office during the show week or at the wool pavilion by 2:30pm on Thursday 3<sup>rd</sup> March.

## **HORSES**

Entries are taken on the day under the marque in the horse section.

## **PAVILION ENTRIES**

Delivered to the Secretary's Office at the Showground between 10am - 4pm on Weekdays, from Monday 28<sup>th</sup> February to Thursday 3<sup>rd</sup> or to the Showground Pavilion on Friday 4<sup>th</sup> March, 8am – 10am.

## **CUT FLOWERS**

Luncheon Pavilion from 3pm – 5pm, on Friday 4<sup>th</sup> March.

## **FARM & GARDEN PRODUCE**

Luncheon Pavilion from 2pm - 4pm, on Friday 4<sup>th</sup> March. Please note times.

## **YARD DOG ENTRIES**

To Adam Cabot 0427 833 110

**HORSE STALL & CAMPING BOOKING INSTRUCTIONS:** Horse stall bookings close 1.3.22

Stabling for the 2022 Barraba Show MUST be booked through the Nominate website: <http://www.nominate.com.au>

By selecting Equestrian then stables and choosing Barraba Show as the venue.

**All entry forms and waivers are available on our website, from the show office and to be completed when submitting your entry.**

A new challenge is being organised by our Young Woman, Brook Smith and her helpers, that being a Farmer Challenge. The Australian Young Farmer Challenge is a fast-paced, agricultural skills-based competition where teams of young men and women battle it out to take home the champion title. The winner of each division takes all. When: Sunday the 6<sup>th</sup> March 2022 at 10am in front of the grandstand. Entry Fee: \$8.00 per team (\$2.00 per team member). Get your team of 4 together, complete the application entry form and return to Brook Smith at Hart Rural, the Secretaries Office at the showground, or email to [barrabapah@hotmail.com](mailto:barrabapah@hotmail.com) or text to 0447 222 347.

(All the team members in your team MUST fall into the same age bracket):

Senior Young Farmer (Over 18years). Junior Young Farmer (12-18years) & Tiny Farmers (under 12). Entry forms & waivers on the show website: [www.barrabashow.com.au/forms](http://www.barrabashow.com.au/forms)

The Clay Pan members will again be providing food & soft drinks in the luncheon pavilion Saturday & Sunday with bacon & eggs breakfast from 7.30am until 10.30am. Salads & sandwiches for lunch and home cooked morning & afternoon teas.

Barraba rugby league members will be having a BBQ at the campdraft and at the rodeos, if you would prefer a juicy steak.

There will be bar facilities (no BYO) available both days & Friday night.

Children's entertainment and fun with face painting by Tamworth face painting on Saturday, the 'Let 'er Buck Pro' Kids Bouncy Rodeo with four live shows each day and the very popular sideshow alley & food vans will be here to entertain all those young & young at heart.

Live music by Fat Man on Friday night after the Xtreme Broncs & Spanish Flyz on Saturday night after the Open rodeo from 9pm until 12 midnight.

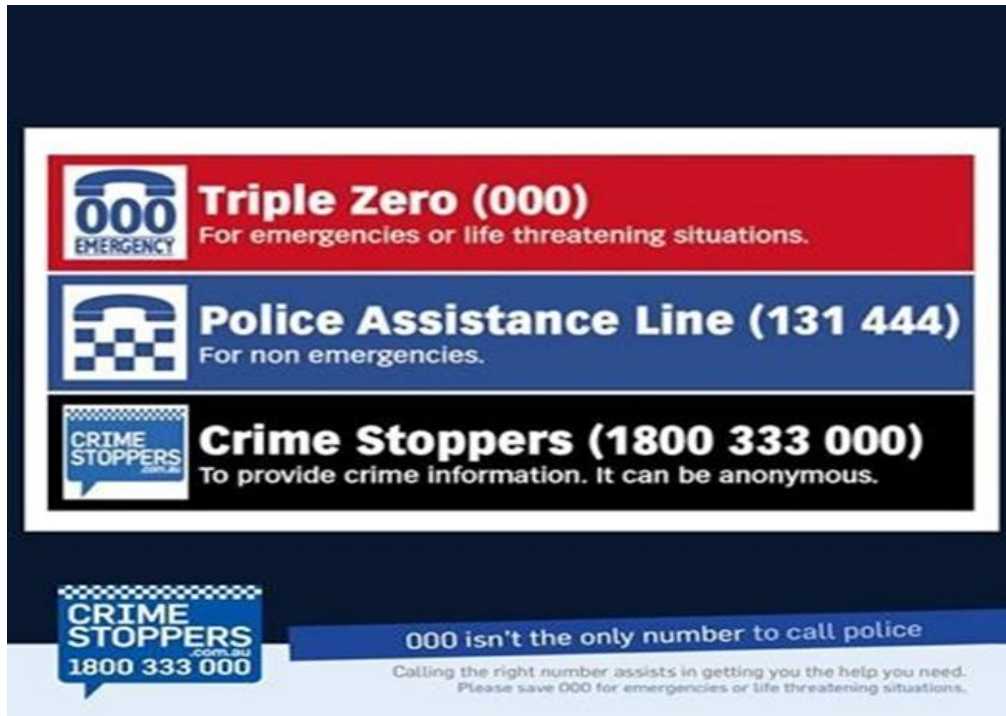
Local Oxley Police Officers and Rural Crime Officers will be in attendance with a display on Saturday from 12md and Sargent Cooper would like to encourage everyone to drop in and say G' Day and get to know your local 'Boys in Blue', who do a wonderful job keeping our community safe.

**Hope to see you all at the 111<sup>th</sup> Barraba Show.**

Current NSW Health Covid rules to apply. Masks to be worn at your own discretion. Please do not attend if you are unwell.

**SEE THE FULL PROGRAM ON PAGE 12**





Tamworth Rural Crimes Unit & Police officers at the show Saturday 5<sup>th</sup> March from 12md



Will be at the Barraba Show Saturday 5<sup>th</sup> March from 10am until 5pm

## History Notes

As everyone should know this is Show Week. The Historical Society will have a small presence in the pavilion and we hope that those interested in history and some of our past citizens will see the photos. Our exhibition was going to be a slide show but with our members being taken away to various functions including funerals this was not possible.

Barraba's first show was held in 1904. There is just a little history in the Easter Celebrations Book published in 1983. The show – Barraba Pastoral and Agricultural Show Association – came into being after a meeting held in the Mechanic's Institute on 21<sup>st</sup> September, 1903. Mr W Morrow was the Hon. Secretary at the time. The newly formed Association then organized the first show to be held on 15<sup>th</sup> April, 1904.

A report from an earlier publication in 1946 says that the 15<sup>th</sup> April, 1904 was a red-letter day in Barraba's history, as it marks the visit of Sir Harry Rawson, Governor of New South Wales to open the first Barraba Show. I am sure most of us have seen the photo of the Governor being driven through the main Street on his way to open the show.

There has been a show for almost every year since then and the showground and its facilities have been improved throughout the years to become what it is today with a large number of buildings and horse facilities.

In the late 1950's the pony camp was held at the showground for a week in August. We camped in the pavilion – a hessian curtain wall separating the boys and girls and a parent sleeping with each section to try and keep order.

Old Mrs Martin cooked our meals on an old wood stove in the old canteen and showers were organized on the ground. Sometimes we had a film to watch in the evening. We had from Sunday afternoon until Saturday in camp finishing with a Jamboree on the Saturday. I am sure most of the children enjoyed the week but I am not sure about those running the camp.

There have of course been other functions held on the showground and I am sure someone will be able to come up with some memories eg: Foot races along the race track – I think there are photos of a three-legged race!

More next week when I have more time.

## Snippets from St Laurence's

March is time to bring our BCA boxes to Lee for emptying. The Bush Church Aid Society have been reaching out to people in remote and regional Australia for over a hundred years: from Norfolk Island to Exmouth, from Darwin to Hobart, and so many places in between. If you would like to donate to this work or to receive their prayer notes, please contact Lee Jackson.

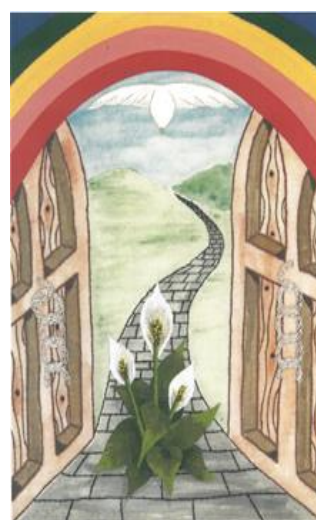
This Friday, 4<sup>th</sup> March, St Laurence's hosts the World Day of Prayer Service. Every news bulletin assures us that the world needs prayer at this time, so please join us at 10am and for morning tea after the service.

On 13<sup>th</sup> March we have two baptisms and on 19<sup>th</sup> there is a working bee from 8am. Then on 26<sup>th</sup> teenagers from all over the Diocese will gather for the Barraba bash.

A friend complained the other day that she didn't know how to pray, that she didn't know the right words. Well, there are no "right words". We don't have to use the language of the Book of Common Prayer: he understands all languages, even 21<sup>st</sup> century slang. Remember Paul's advice, *"with thanksgiving...present your requests to God"* (Philippians chapter 4, verse 6). Just turn to him – he knows what is in our hearts.

Remember the advice in Proverbs, chapter 3, verse 5, *"Trust in the Lord with all your heart and lean not on your own understanding."*

Beth



### World Day of Prayer 2022

England, Wales and  
Northern Ireland

Date and time:  
4<sup>th</sup> MARCH, 2022 10AM

Location:  
ST. LAURENCE'S  
ANGELICAN

Contact person:  
JENNI 0475417919

**Barraba Anglican Parish**  
**St Laurence's Barraba:**  
**Sunday service at 9.00am**  
**Woodsreef: 2nd Sundays**  
**11.30am**  
**Bereen: 4th Sundays 6.00pm**

**Uniting Church Notice**  
**Sunday 6<sup>TH</sup> March 2022.**  
**The service is at 10.45am**

**CATHOLIC CHURCH NOTES**  
Barraba—1st & 5th Sunday 6pm  
2nd 3rd & 4th Sunday 9am  
Upper Horton 3rd Sunday  
11am  
Weekday Mass Wednesday  
10am

**BARRABA COMMUNITY NEWS**  
COMMUNITY OWNED AND EDITED

**Published by Community**  
**College Northern Inland Inc.**  
Cnr. Alice and Fitzroy St  
Barraba  
Contacts: Bronwyn  
0447165008  
Office: 02 67821662  
Email  
[news@barrabacommunitynews.org.au](mailto:news@barrabacommunitynews.org.au)  
Printed on site at the  
Community College.  
Free publication by email or  
collection from local Barraba  
main street businesses.



**BARRABA COMMUNITY NEWS**  
COMMUNITY OWNED AND EDITED

**Advertise in Barraba**  
**Community News and**  
**reach 750 households in**  
**our local area.**

**Contact**  
**[news@barrabacommunitynews.org.au](mailto:news@barrabacommunitynews.org.au) for the**  
**best advertising rates in**  
**the region**

**From NSW Government Website**

**From Friday 25 February 2022,**  
**the following restrictions will be**  
**eased:**

Face masks will only be required on public transport and public transport waiting areas, planes, and indoors at airports, public hospitals, private health facilities, residential aged care facilities or hostels and indoor music festivals with more than 1000 people.

The 20,000 person cap on music festivals will be removed.

Singing and dancing will be permitted at all venues.

Vaccination requirements will remain for indoor music festivals over 1000 people.

#### **Masks**

All people over the age of 12 must wear a face mask:

on public transport and public transport waiting areas (including in taxis and rideshare services)

at a public hospital or private health facility

at a residential care facility or hostel

on an aircraft when the aircraft is flying above NSW, and in the airport

indoor music festivals with more than 1000 people.

#### **Regional Dam Levels from** **Water NSW**



Chaffey 100.1%  
Copeton 92.9%  
Keepit 99.8%  
Split Rock 70.3%





## Council meeting update

Here is an overview of outcomes from TRC Ordinary Meeting **Tuesday 22 February, 2022:**

There was high praise for the success of tree planting initiatives when Councillors discussed a report from the Urban Street Tree Management Plan Advisory Group including a proposed 2022 Greening Strategy. The proposal follows the success of the 2021 strategy which saw about 9000 new trees planted in the region. The proposal for this year identifies sites in Tamworth, Oxley Vale, Calala, Kootingal, Manilla, Bendemeer and Woolomin across the Tamworth region for tree planting in autumn, winter and spring as well as a planting project in the Tamworth CBD including more than 100 trees. Councillors supported the proposed strategy and agreed for external funding to be sought for the CBD project.

Councillors resolved to make a written submission to the NSW Department of Planning and Environment to highlight concerns they have with the NSW Government's Reform of Infrastructure Contributions. Councillors formed the opinion that the reforms tend to provide benefits to the development industry by cost shifting from the developer to all ratepayers. However, rates have been pegged at such a low level by the Independent Pricing and Regulatory Tribunal that many Councils - including Tamworth Regional Council - will have no real capacity to enhance facilities to meet residents' expectations for a liveable community with good amenity. The submission will highlight Council's concerns about rate pegging now being coupled with infrastructure contributions reform as well as

proposed restrictions on developer contributions which result in Council being able to charge contributions for community land but not for any contributions towards building a facility on that land. Tamworth Region Mayor Russell Webb told tonight's meeting the local community is "significantly disadvantaged" by the reforms. "The State Government's demographers projected our growth at .04 and set our rate peg using that but we are actually growing at between 1.5 per cent and 2 per cent."

For more information, see the full reports at

[www.tamworth.nsw.gov.au/business-papers](http://www.tamworth.nsw.gov.au/business-papers)

Watch the video report at

[www.facebook.com/TamworthRegionalCouncil](https://www.facebook.com/TamworthRegionalCouncil)



Lic No. 306630C

- Plumber
- Drainer
- Gasfitter
- Polywelder
- Roof Welder

Ph. 0408117358

[wardsplumbing@bigpond.com](mailto:wardsplumbing@bigpond.com)

**PHIL DENYER**  
**MECHANICAL REPAIRS**  
**Ph (02) 67 821 107**

**Rod Bonner**  
**Your local Plumber, Drainer,**  
**Gasfitter and Handyman**  
**Lic No. L8791**  
**Text is best 0447 052 140**  
**[plumberdrainer@gmail.com](mailto:plumberdrainer@gmail.com)**

## Barraba 7 day Forecast from the Bureau of Meteorology

**Wednesday 2 Mar**

**Summary** Max 30

**Possible shower**

Chance of any rain: 40%



**Thursday 3 Mar**

**Summary** Min 15 Max 29

**Show or two**

Chance of rain: 60%



**Friday 4 Mar**

**Summary** Min 16 Max 30

**Possible shower**

Chance of any rain: 40%



**Saturday 5 Mar**

**Summary** Min 16 Max 30

**Shower or two**

Chance of any rain: 60%



**Sunday 6 Mar**

**Summary** Min 15 Max 28

**Shower or two**

Chance of rain: 60%



**Monday 7 Mar**

**Summary** Min 13 Max 28

**Possible shower**

Chance of any rain: 40%



**Tuesday 8 Mar**

**Summary** Min 14 Max 30

**Partly cloudy**

Chance of any rain: 30%



### We're live on the web

Now you can get the local news updated more frequently by going to

[www.barrabacommunitynews.org.au](http://www.barrabacommunitynews.org.au)

## **Regent honeyeaters were once kings of flowering gums. Now they're on the edge of extinction. What happened?**

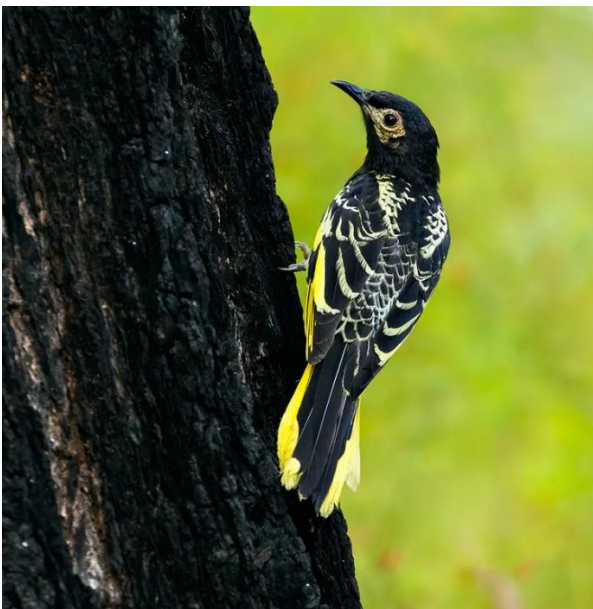
1. **Rob Heinsohn**, *Professor of Evolutionary and Conservation Biology, Australian National University*
2. **Dejan Stojanovic**, *Postdoctoral Fellow, Australian National University*
3. **Ross Crates**, *Postdoctoral fellow, Australian National University*

Less than 80 years ago, regent honeyeaters ruled Australia's flowering gum forests, with huge raucous flocks roaming from Adelaide to Rockhampton.

Now, there are less than 300 birds left in the wild. Habitat loss has pushed the survivors into little pockets across their once vast range.

Sadly, our new research shows these birds are now heading for rapid extinction. Unless we urgently boost conservation efforts, the regent honeyeater will follow the passenger pigeon into oblivion within the next 20 years.

If we let the last few die, the regent honeyeater will be only the second bird extinction on the Australian mainland since European colonisation, following the paradise parrot.



### **How did it come to this?**

With vivid yellow and black wings, embroidered body and warty faces, these honeyeaters are among Australia's most spectacular birds. John Gould, one of Australia's earliest European naturalists, observed these birds in "immense flocks amongst the brushes of New South Wales". He

described the regent honeyeater as "the most pugnacious bird he ever saw", noting they "reigned supreme in the largest, most heavily-flowering trees." Their success in securing nectar supplies made them vital pollinators.

The world Gould saw is sadly a thing of the past. Regent honeyeater populations have plummeted, with the loss of over 90% of their preferred woodland habitats to farmland.

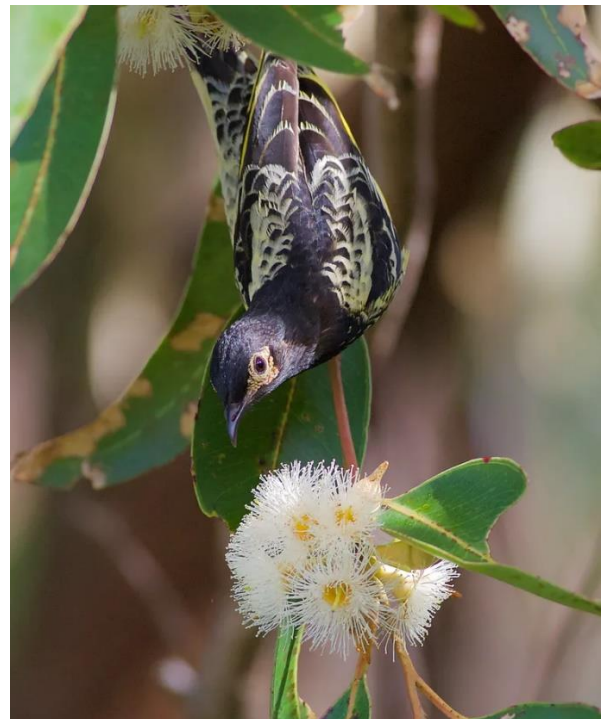
You might wonder how this could be, given there are still large tracts of forest in Australia. But these are invariably on poorer soils and hilltops. Our remaining forests do not yield the rich nectar regent honeyeaters require for breeding.

As their habitat has declined, the surviving regent honeyeaters have been forced to compete with larger species – without the safety of their huge flocks. The result? The once common species no longer reigns supreme.

### **Gone within 20 years**

Unless conservation actions are urgently stepped up, our research shows these birds will be extinct within 20 years.

We've known about the decline of regent honeyeaters since the late 1970s. In response, a recovery team including BirdLife Australia and Taronga Conservation Society launched a long-term recovery effort to protect habitat, plant new trees and release zoo-bred birds. These efforts have slowed but not arrested the decline of these birds.



In 2015, we began a large-scale survey to better understand their population decline. Regent honeyeaters are a notoriously difficult bird to study in the wild. As nomads, they wander long distances throughout their vast range in



search of nectar in their favoured tree species. Finding these birds is hard enough, let alone monitoring the population in detail.

After six years of intensive fieldwork, and with data from research in the 1990s and long term bird banding, we have finally gathered enough information to be able to understand the challenges for the few remaining wild birds. We now know their breeding success has declined because their nests are raided and the chicks killed by aggressive native species, with noisy miners a particular problem.

We also know the wild birds are losing their song culture because of a lack of older birds for fledglings to learn their songs.

Our fieldwork has given us accurate estimates of vital breeding data, such as how many young birds fledge for each adult female, how many birds are breeding and how well juveniles are surviving. We combined this with data from the decades of monitoring of zoo-bred and released birds to create population models, which allow us to predict the future for the wild population under different conservation scenarios.

### **Habitat is king**

What do the models show? That time is critical. To have any chance of getting the regent honeyeater back, we must build its numbers up enough for them to be able to roam in large flocks for protection.

How? First, we have to nearly double the nesting success rate for both wild and released zoo-bred birds. Too many young birds are dying early. That means we have to find nesting birds early in the breeding season and protect them from noisy miners, pied currawongs and even possums.

Next, we have to boost the numbers of zoo-bred birds released in the Blue Mountains, and maintain these numbers for at least twenty years. Staff at Taronga Conservation Society are preparing zoo-bred birds for the trials of the wild by exposing them to competition in flight aviaries, song tutoring young males and improving husbandry practices in zoos to increase survival in the wild.

Finally, our models clearly show regent honeyeaters will only become self-sustaining if we do much more to secure their habitat. Their remaining pockets of habitat are simply too small. We must protect all remaining habitat, restore degraded habitat and control noisy miners.

Without habitat, other conservation efforts will be pointless. The honeyeater will simply never reach flock sizes large enough to muscle their way back into the surprisingly competitive business of drinking nectar.

Unfortunately, we continue to destroy essential regent honeyeater habitat in some areas even as we attempt to restore lost habitat elsewhere. For example, if the Warragamba Dam in the Blue Mountains is raised it will flood essential habitat and make it even harder to bring back our iconic honeyeater.



### **The status quo is not enough**

For decades, conservationists and researchers have worked to save the regent honeyeater. Despite this tireless work, the species is inching towards the exit. If we maintain the status quo, we will lose it.

We must think bigger. Nest protection and release of zoo-bred birds can help get flock sizes up, but these efforts will be pointless if there are no blossoms for them to drink from.

Like the regent honeyeater, the passenger pigeon sought safety in numbers. We now know its extinction could have been predicted, if modern risk assessments had been available. Those same assessments and models tell us very clearly what will happen to the regent honeyeater.

It is too late for the passenger pigeon. It is not too late to save the regent honeyeater. But only if we act now.



**Why do banks leave vault doors open and then chain the pens to the counters?**

**Why do people order double cheeseburgers, large fries, and a diet coke?**

**Why is 'abbreviated' such a long word?**

## 2022 SHOW PROGRAM

Thursday 3 March		Saturday 5 March		Sunday 6 March	
<b>Daylight start</b>	Maiden draft	<b>Daylight start 7:30am</b>	Junior, juvenile & open draft Yard Dog trials	<b>Daylight 7:30am</b>	Ladies & open draft Yard Dog Trials
<b>2.30pm</b>	Wool entries	<b>8:30am</b> <b>11.00am</b>	Horse Ring 1 Horse Ring 2	<b>8:30am</b>	Horse Rings 1, 2 & 3
		<b>8.30am</b>	Cattle judging Young paraders after interbreed classes	<b>8:30am</b>	Australian Stock Horse judging
		<b>9.00am</b>	Meat breed sheep judging. <i>After Meat Breed Sheep - Young Judging Competition.</i>	<b>9am – 3pm</b>	Wool & Main Pavilions Open
		<b>9am</b>	Show jumping		
		<b>9am – 6pm</b> <b>9am – 5pm</b>	Main Pavilion Open Wool Pavilion Open	<b>10.00am</b>	<b>Young Farmers challenge</b>
<b>Friday 4 March</b>		<b>9.30am</b>	Poultry Judging	<b>10.30am</b>	<b>The Let er Buck Pro Mini Kids Bouncy Rodeo</b>
<b>Daylight start</b>	<b>Novice draft</b>	<b>9:30am – 4.00pm</b>	Animal farm		
<b>8 - 10am</b>	<b>Pavilion</b>		<b>Tamworth face painting</b>	<b>11.00am</b>	Wood chop in front of the grandstand
<b>entries</b>		<b>10:00am -5pm</b>		<b>11.30am</b>	Barraba band
<b>9.30am</b>	<b>Wool</b>		<b>NSW Oxley Police &amp; Crime Stoppers display</b>		
<b>Judging</b>		<b>12:00pm</b>		<b>12pm</b>	<b>The Let er Buck Pro Mini Kids Bouncy Rodeo</b>
<b>11am Wool Judges' comments</b>		<b>10am</b>	Light Harness Main Ring		
<b>2pm to 4pm</b>	Farm & Garden entries	<b>10am</b>	<b>The Let er Buck Pro Services One and Only Famous Mini Kids Bouncy Rodeo</b>	<b>1.30pm</b>	<b>The Let er Buck Pro Mini Kids Bouncy Rodeo</b>
<b>3pm to 5pm</b>	Flower entries	<b>10.30am</b>	Fat Lamb Weighing & Judging.	<b>1:30pm</b>	Dog & Pet show Judging Pavilion Pick up
<b>3.30pm</b>	<b>Junior beef</b>	<b>11am &amp; 3pm</b>	Sheep shearing demonstration in front of the Grandstand	<b>3pm-4pm</b>	
<b>4pm – 6pm</b>	<b>cattle judging</b>		<b>Veterans &amp; Young Guns shearing display</b>	<b>3.00pm</b>	<b>The Let er Buck Pro Mini Kids Bouncy Rodeo</b>
<b>4pm – 5pm</b>	Main Pavilion Open Wool Pavilion Open				
<b>6pm</b>	<b>Xtreme Broncs Rodeo</b>	<b>10am to 4.00pm</b>  <b>12.30pm</b>  <b>12pm – 1.50pm</b> <b>2pm 2.30pm</b>	Manilla Vintage Machinery & Classic Cars in front of the Grandstand <b>The Let er Buck Pro Mini Kids Bouncy Rodeo.</b> Pre-register for sporting event Sporting events in main ring <b>The Let er Buck Pro Mini Kids Bouncy Rodeo</b>		
<b>9pm-12mn</b>	<b>Live music by Fat Man</b>	<b>4.00pm</b>	Official Opening <b>Mini &amp; Junior Youngwoman/Youngman judging in front of the grandstand</b>		
		<b>4:30pm</b>	<b>Junior &amp; Open Six Bar Jumping in front of the Grandstand.</b>		
		<b>5pm</b>	<b>The Let er Buck Pro Services Mini Kids Bouncy Rodeo</b>		
		<b>6pm</b>	<b>Open Rodeo</b>		
		<b>9pm-12mn</b>	<b>Live music- by Spanish Flyz</b>		